



# PALM

**BEDS:** 3  
**BATHS:** 2 1/2

## PRIVATE ELEVATOR

From Garage to Patio

## OFFICE-/BEDROOM

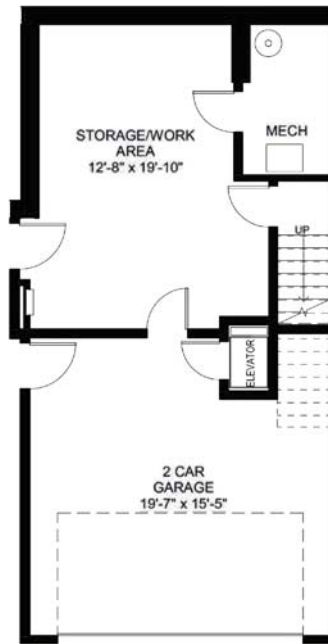
Bonus room

## ROOF PATIO

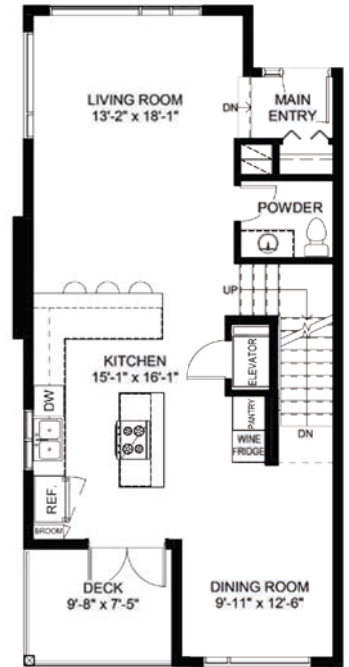
With Kitchenette and Storage Room

**Total living area:** 2075 SQ.FT

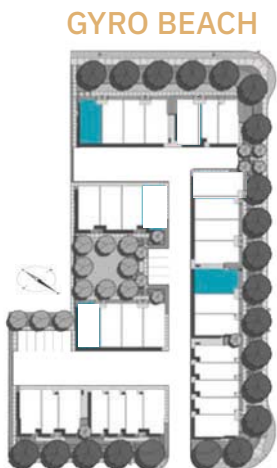
**Garage:** 364 SQ.FT  
**Bonus Area:** 465 SQ.FT  
**Main Level:** 740 SQ.FT  
**Upper Level:** 735 SQ.FT  
**Roof Level Patio:** 674 SQ.FT



ENTRY LEVEL



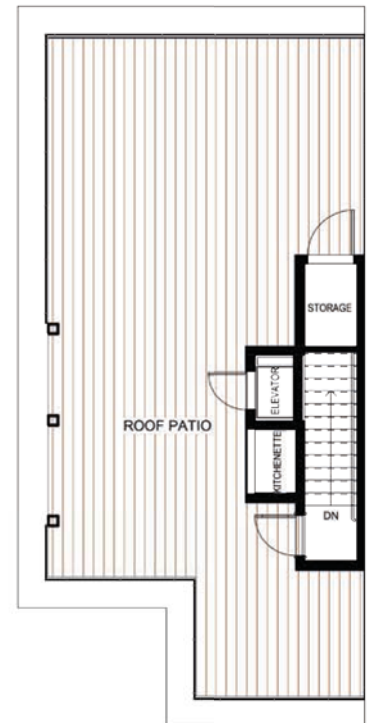
MAIN LEVEL



## GYRO BEACH



UPPER LEVEL



ROOF LEVEL



The Developer reserves the right to make changes without notice. E&O.E  
Northern Lights Land Development Corp. , © February 2021



# PALM

REVERSE

**BEDS:** 3  
**BATHS:** 2 1/2

## PRIVATE ELEVATOR

From Garage to Patio

## OFFICE-/BEDROOM

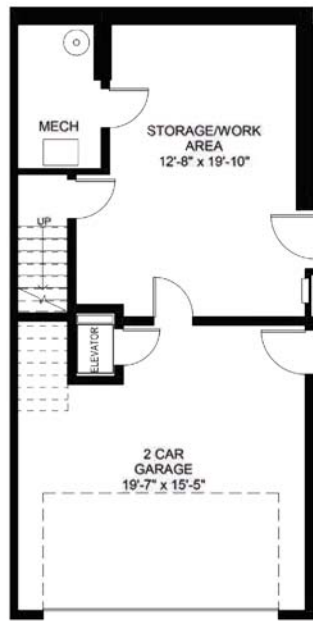
Bonus room

## ROOF PATIO

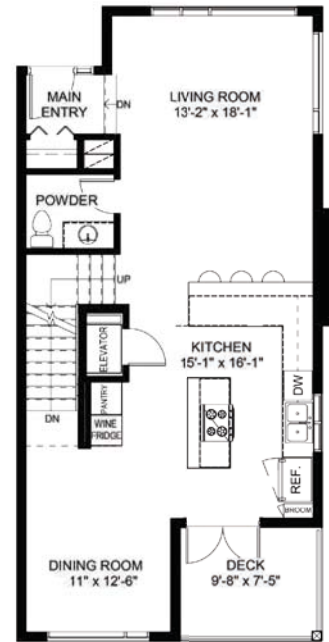
With Kitchenette and Storage Room

**Total living area: 2075 SQ.FT**

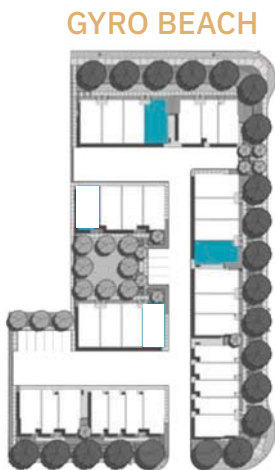
Garage: 364 SQ.FT  
Bonus Area: 465 SQ.FT  
Main Level: 740 SQ.FT  
Upper Level: 735 SQ.FT  
Roof Level Patio: 674 SQ.FT



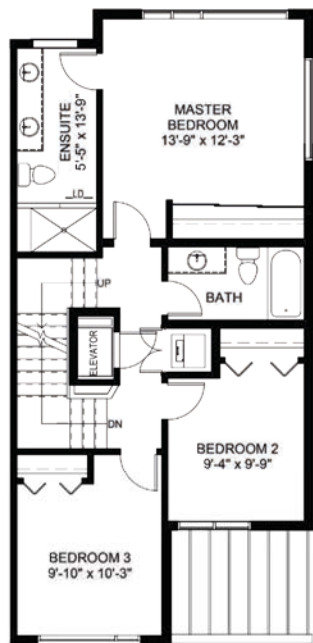
ENTRY LEVEL



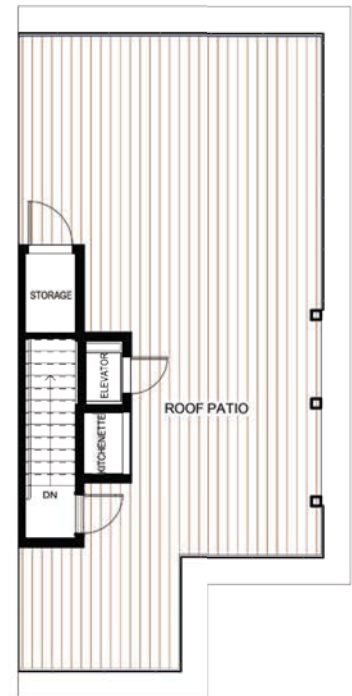
MAIN LEVEL



## GYRO BEACH



UPPER LEVEL



ROOF LEVEL



The Developer reserves the right to make changes without notice. E&O.E  
Northern Lights Land Development Corp. , © February 2021



# SHELL

**BEDS:** 2  
**BATHS:** 2

## ELEVATOR ROUGH IN

From Garage to Patio

## ROOF PATIO

With Kitchenette and Storage Room

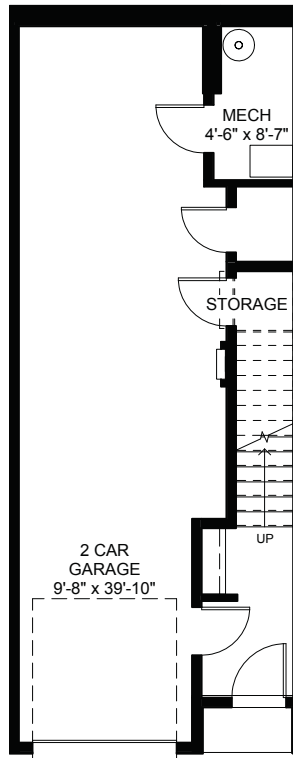
**Total living area: 1495 SQ.FT**

Entry Level/Garage: 423 SQ.FT

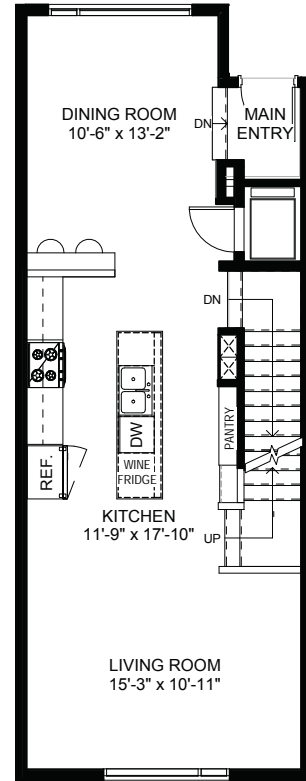
Main Level: 615 SQ.FT

Upper Level: 624 SQ.FT

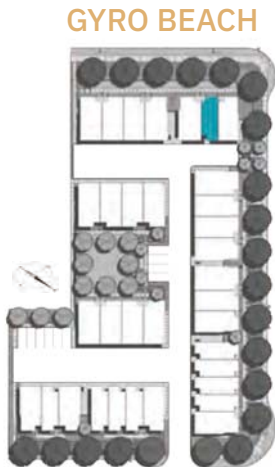
Roof Level Patio: 589 SQ.FT



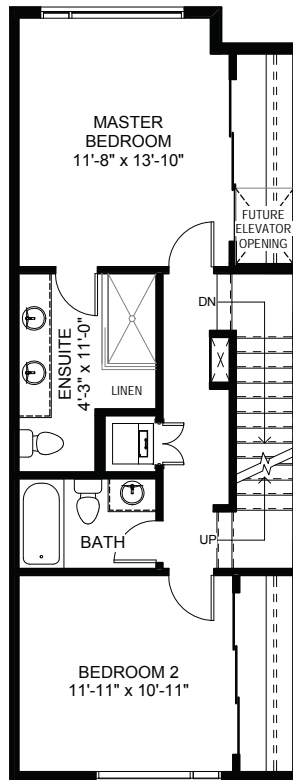
ENTRY LEVEL



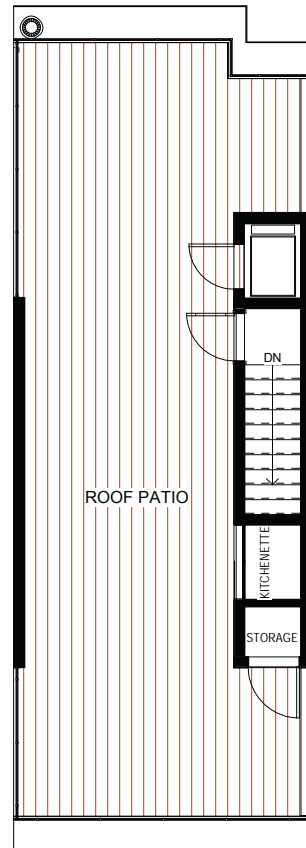
MAIN LEVEL



## GYRO BEACH



UPPER LEVEL



ROOF LEVEL



The Developer reserves the right to make changes without notice. E&O.E  
Northern Lights Land Development Corp. , © February 2021